

# User Guide



# Contents

## Getting started

Appearance	1
Touch panel	2
Assembling the printer	3
Loading paper	6
Powering on/off the printer and putting the printer in sleep mode	8
Connecting the printer to a network	9

## Printing

In-app printing	13
Tap-to-Print	13
Direct printing	14
Share printing	16
Remote printing	17

## Copying

Single-sided copying	18
Double-sided copying	19
Card copying	20
N-in-1 copying	21

## Scanning

## More

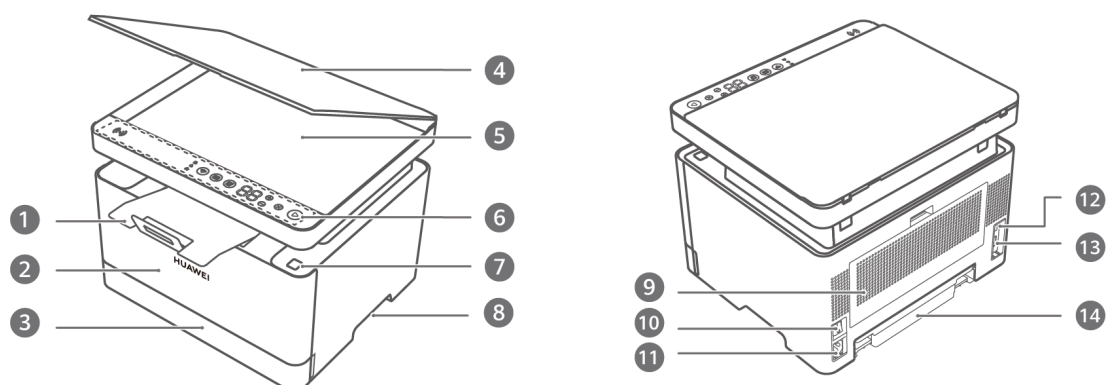
Resetting the network	23
Updating the firmware	23
Installing the driver	24
Replacing the toner cartridge	24
Replacing the drum cartridge	26
Restoring the printer to its factory settings	29
Checking the printer's serial number	30


## Safety information

## Legal Notice

# Getting started

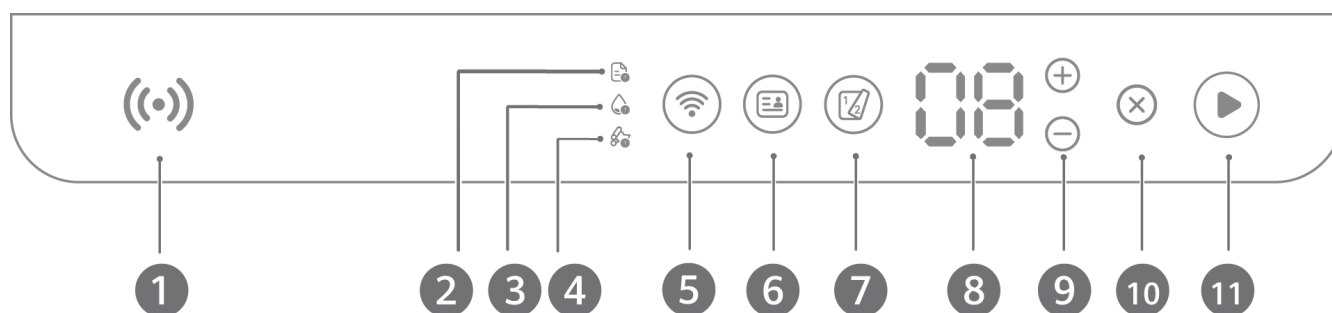
## Appearance




1	<b>Outlet tray</b> The outlet tray holds the printed paper.  The outlet tray is inserted in the printer when you assemble the printer for the first time. Pull it out before printing or copying.
2	<b>Front cover</b> You can open the front cover to replace the toner cartridge.
3	<b>Paper tray</b> You can load paper into the paper tray.
4	<b>Scanner cover</b> You can open the cover to place a document for scanning or copying.
5	<b>Scanning area</b> You can place a document in the scanning area for scanning or copying.
6	<b>Touch panel</b> You can use the function buttons on the touch panel to connect the printer to a network, start copying, or perform other operations.
7	<b>Button on the top cover</b> You can press the button to open the top cover for replacing the drum cartridge or troubleshooting faults.
8	<b>Left/Right indent</b> You can use them to carry and move the printer.
9	<b>Rear cover</b> You can open the rear cover to check for faults such as paper jams.

10	<b>Power switch</b> You can use it to power the printer on or off.
11	<b>Power port</b> You can connect it to a power supply with a power cable to power on the printer.
12	<b>LAN port</b> You can insert a network cable in it for the printer to connect to a network.
13	<b>USB-B (USB 2.0) port</b> You can use it to connect the printer to a computer to transfer data.
14	<b>Dust-proof cover</b> It prevents dust from entering the rear of the paper tray. <i>i</i> The dust-proof cover is inserted in the printer when you assemble the printer for the first time. It will be ejected after you load paper into the paper tray.

## Touch panel




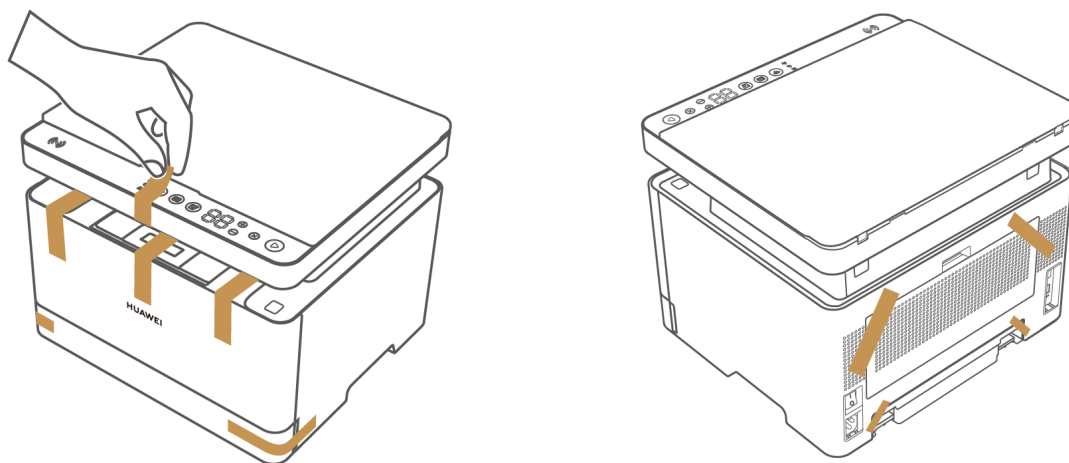
1	<b>Huawei Share</b> You can tap the NFC area of certain Huawei phones against the printer's Huawei Share area to share a network or start printing.
2	<b>Paper Out</b> The indicator will turn red if the printer is out of paper. In this case, load paper into the paper tray.
3	<b>Toner Low</b> The indicator will turn red if the printer is nearly out of toner. In this case, replace the toner cartridge. <i>i</i> It is recommended that you go to an official Huawei channel to purchase an original toner cartridge for the printer. If you use a non-original toner cartridge, the printing quality and performance of the printer may not meet the design standards.
4	<b>Paper Jam</b> The indicator will turn red if a paper jam occurs. In this case, check for where the paper jam is and take out the jammed paper carefully.

5	<p><b>Network</b></p> <p>You can press and hold the button for more than 3 seconds to reset the network. The indicator of the button indicates the current network status of the printer.</p> <ul style="list-style-type: none"> <li>• If it is off when the printer is not in sleep mode, it indicates that the printer is not connected to a network.</li> <li>• If it flashes white, it indicates that the printer is being connected to a network.</li> <li>• If it is steady white, it indicates that the printer has been connected to a network.</li> <li>• If it flashes blue, it indicates that a device is trying to connect to the printer through direct printing. In this case, you can press the button to confirm the connection.</li> </ul>
6	<p><b>Card Copy</b></p> <p>You can press the button to enter Card copy mode.</p>
7	<p><b>Duplex Copy</b></p> <p>You can press the button to enter Duplex copy mode.</p>
8	<p><b>Numeric display</b></p> <ul style="list-style-type: none"> <li>• It displays the selected number of copies.</li> <li>• It displays error codes.</li> </ul>
9	<p><b>Plus and minus buttons</b></p> <p>You can press the Plus (+) and Minus (-) buttons to adjust the number of copies.</p> <p> If you want to print multiple copies, press and hold the Plus (+) button to add 10 copies at a time.</p>
10	<p><b>Cancel</b></p> <p>You can press the Cancel button to cancel the current operation.</p>
11	<p><b>Start</b></p> <p>You can press the Start button to start printing, or press and hold it for 3 seconds to print the printer's system information page for viewing basic information about the printer.</p> <p>The indicator of the button indicates the current working state of the printer.</p> <ul style="list-style-type: none"> <li>• If it is steady white, it indicates that the printer is in the standby state.</li> <li>• If it flashes white, it indicates that the printer is in the working state.</li> <li>• If it flashes red, it indicates that the printer is faulty.</li> </ul>

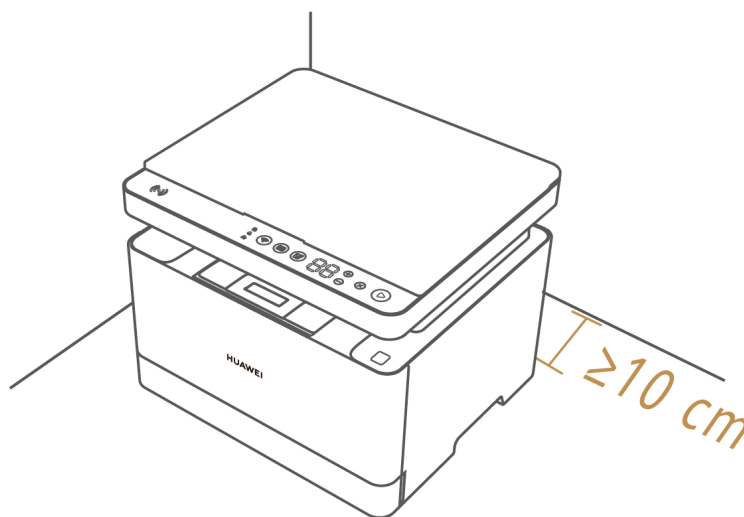
## Assembling the printer

- 1 Remove the printer's packaging and all adhesive tape.

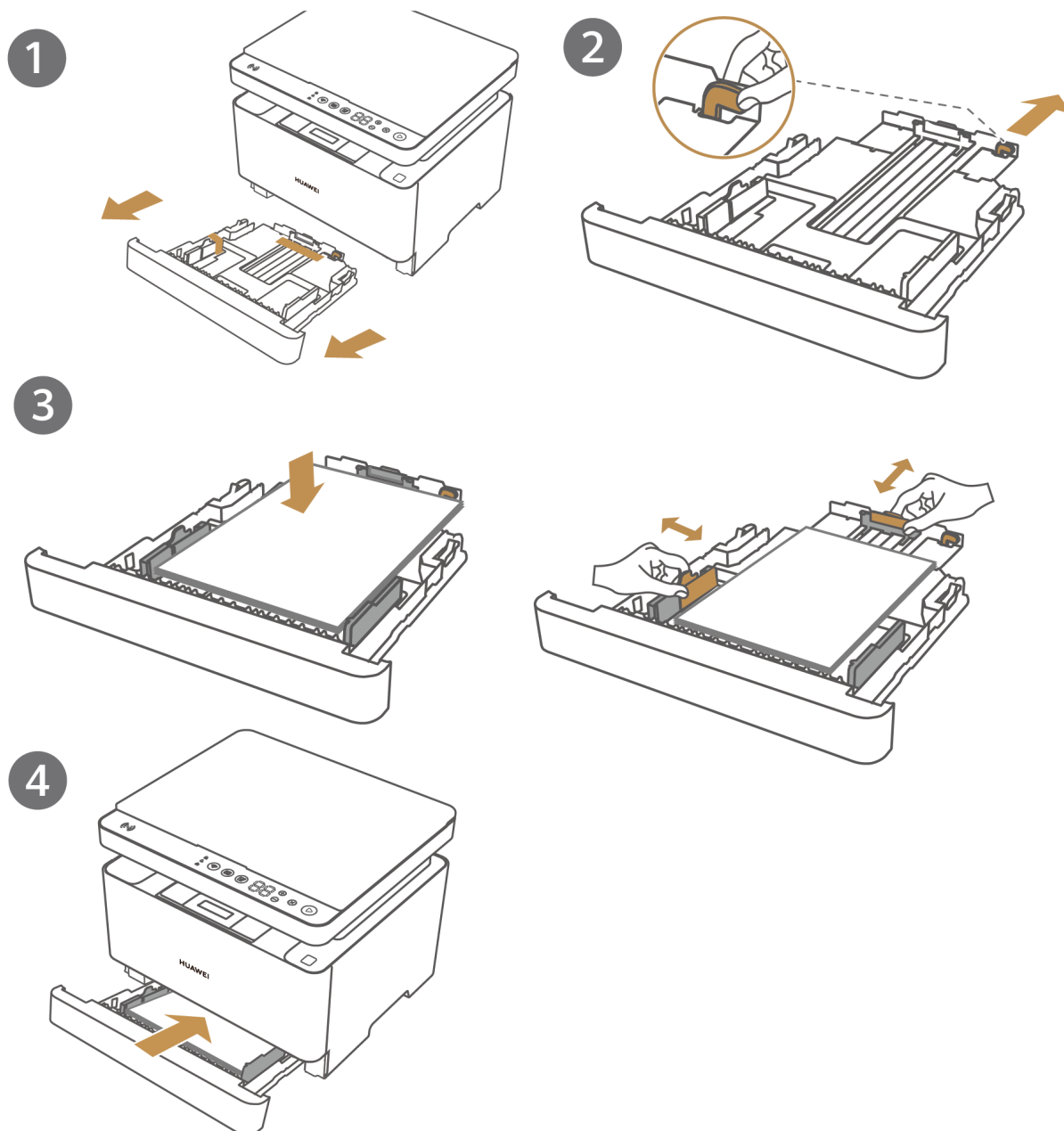
-  Do not forget to remove the adhesive tape on the back of the printer.



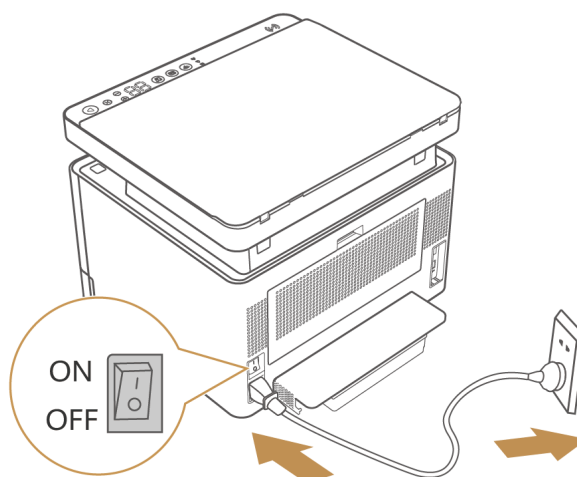
- 2** Place the printer on a horizontal surface, with a space of at least 10 cm behind the printer so that the dust-proof cover can be ejected when you load paper into the paper tray.



- 3** Press both sides of the paper tray with both hands, pull it out, and remove the adhesive tape from the paper tray. Hold the handle and pull out the rear baffle. Flatly load the paper (such as A4 paper). When loading other sizes of paper, adjust the rear and left-right baffles to secure them, and reinsert the paper tray.



- 4** Connect the printer to a power supply and toggle on the Power switch. The printer will enter the working state when the Start indicator lights up.



**5** Press and hold the Start button for 3 seconds to check whether the system information page can be printed. If so, it indicates that the printer has been assembled properly.

- i** The system information page contains configuration of the printer, such as the model name, network parameters, and hotspot name and password, for you to view basic information about the printer. Keep the system information page properly to prevent the disclosure of any information.

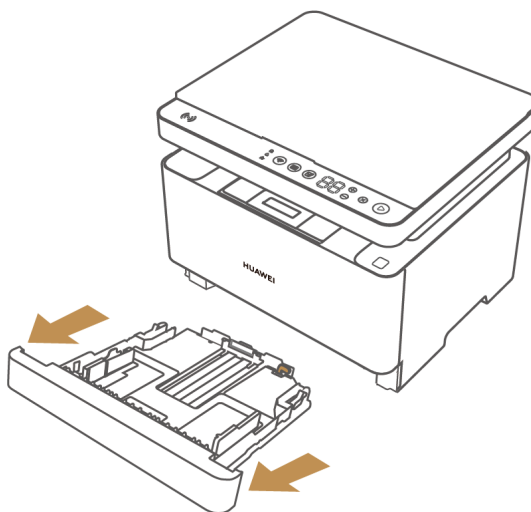


## Loading paper

**i** The printer supports the following paper types and sizes:

- Paper types: ordinary paper, thick paper, and recycled paper.
- Paper sizes: A4, B5 JIS, A5 (SEF), B6 JIS (SEF), A6 (SEF), Letter, and Executive.
- Paper thickness: 60 to 105 g/m<sup>2</sup>.

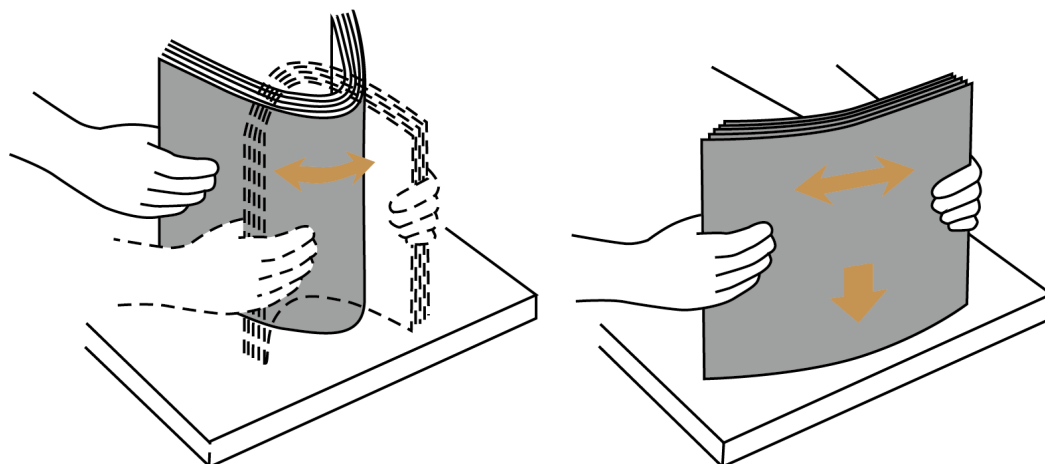
**1** Press both sides of the paper tray with both hands to pull it out.



**2** Take sheets of paper for printing, shuffle them back and forth to loosen the sheets, fan the sheets, and place them down on a flat surface to even them out and prevent paper jams.

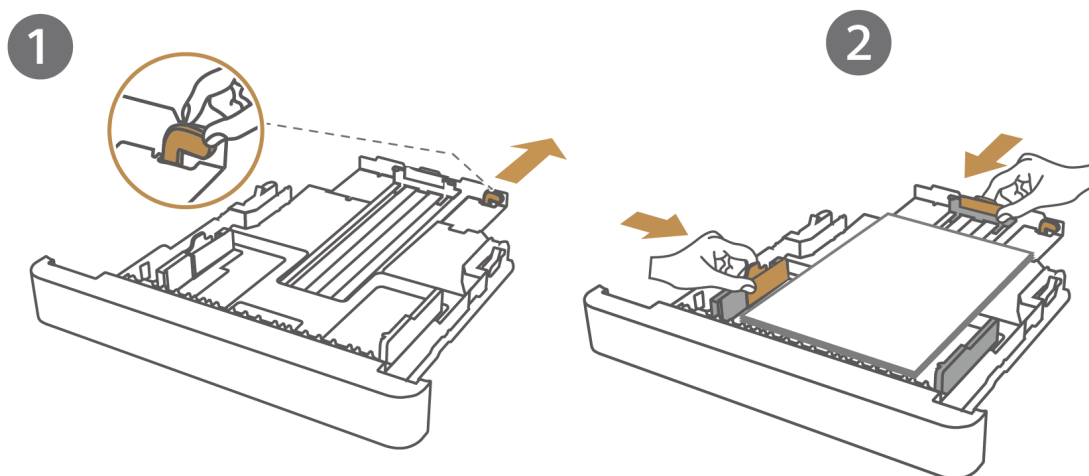


- i** A curled sheet of paper may cause paper jams, so flatten the paper before loading it.



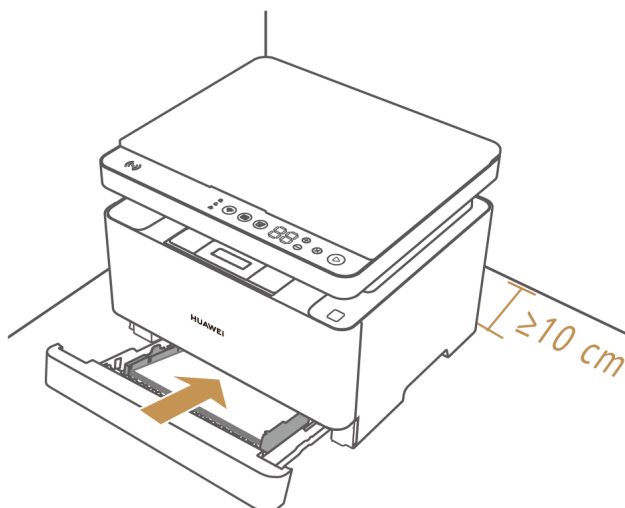
- 3** Hold the handle of the paper tray, pull out the rear baffle, load an appropriate amount of paper with the printable side facing down, and slide the paper length baffle against the paper edge.

- i** If you want to load a sheet of paper that has been printed on one side, place it on the top of other paper with the blank side facing down, and put the paper into the paper tray.



- 4** Insert the paper tray back into the printer. In this case, the paper tray's dust-proof cover will be ejected.

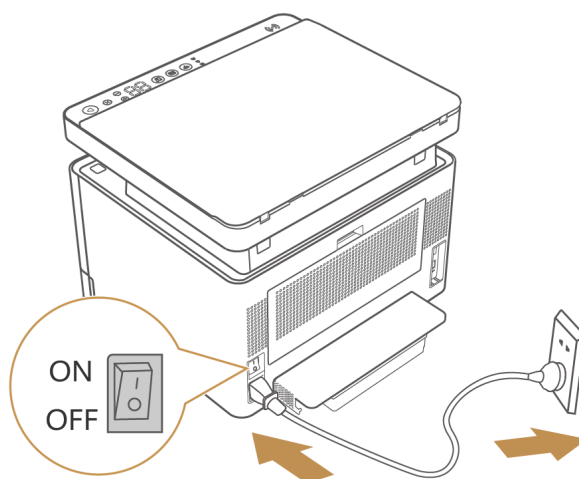
- i** Please note that you need to reserve a space of at least 10 cm behind the printer. Otherwise, the paper tray's dust-proof cover cannot be ejected normally after you load paper, which will result in the paper being curled or jammed and the printer being unable to work normally.



## Powering on/off the printer and putting the printer in sleep mode

### Power on/off the printer

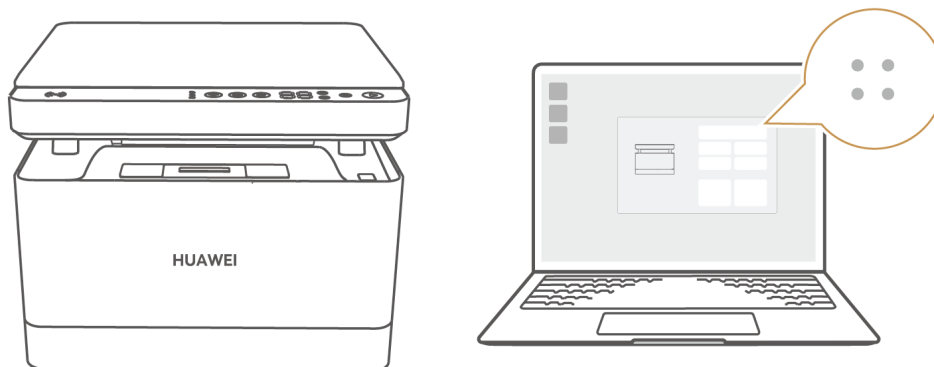
- 1 Insert the power cable into the power port on the back of the printer and the other end into the power socket.
- 2 Find the Power switch on the back of the printer and press it upwards. If the screen of the printer's touch panel lights up, it indicates that the printer is powered on. To power off the printer, toggle off the Power switch.



### Sleep mode

If no operation is performed on the printer for five minutes, the printer will enter sleep mode by default. In this case, all indicators on the touch panel will turn off. You can touch the touch panel to wake the printer up from sleep mode.

- i** When the printer is connected to a computer, you can open the HUAWEI Print client or access the printer homepage of PC Manager, touch the More icon in the upper right corner of the screen to open the device settings screen, and follow the onscreen instructions to set the time for the printer to sleep.



### Deep sleep mode

When the printer is not connected to the Internet or any other device, it will enter deep sleep mode after 25 minutes of being idle. A printer in deep sleep mode cannot be connected to due to the fact that wireless features (Wi-Fi and Bluetooth) and ports (LAN port and USB-B port) are disabled. You can touch the touch panel to wake the printer up from deep sleep mode.

## Connecting the printer to a network

You can use the control panel on the printer to quickly start copying after the printer is assembled. To use the printing and scanning features, you need to connect the printer to a device such as a computer or mobile phone. You can use any of the following methods to connect the printer to another device and configure a network for the printer.

- i** The printer supports 2.4 GHz Wi-Fi networks but does not support 5 GHz Wi-Fi networks, so make sure that your Wi-Fi network works on the 2.4 GHz frequency band. In addition, the printer does not support hotspots from portals in public places like airports and hotels.

### Method 1: Add the printer in HUAWEI AI Life

Download and install the latest version of HUAWEI AI Life on your phone or tablet, enable Bluetooth and the location service, and connect your phone or tablet to a Wi-Fi network. Use your HUAWEI ID to log in to the app, touch + in the upper right corner, select **Add device**, and follow the onscreen instructions to add the printer. Follow the onscreen instructions when you are prompted to configure the printer network.

- If your device cannot find the printer, press and hold the Network button on the printer for more than 3 seconds to reset the network, or restart the printer when the Network indicator on the touch panel is flashing white. For detailed operations, see **Adding and using printers in HUAWEI AI Life**:  
<https://consumer.huawei.com/en/support/content/en-us15849001/>
- If your phone runs iOS or Android, you will need to update HUAWEI AI Life to the latest version.
- If you are using an EMUI 12 phone or a HarmonyOS tablet, you can also connect the printer to your phone through pop-up pairing. To do so, place your phone within 30 cm of the printer. A connection pop-up window will then be displayed. Follow the onscreen instructions to add the printer.



### Method 2: Add the printer in HUAWEI PC Manager

If you are using a Huawei computer running Windows, enable Bluetooth, and connect the computer to the Internet. Open HUAWEI PC Manager, log in to your HUAWEI ID, and go to **My devices > Add device**. Then find the Huawei printer and follow the onscreen instructions to complete the connection. Follow the onscreen instructions when you are prompted to configure the printer network.

- If your device cannot find the printer, press and hold the Network button on the printer for more than 3 seconds to reset the network, or restart the printer when the Network indicator on the touch panel is flashing white. For detailed operations, see **Adding and using printers in HUAWEI PC Manager**:

<https://consumer.huawei.com/en/support/content/en-us15849000/>

- To use this feature, HUAWEI PC Manager 12.0 or later is required.
- Some Huawei computers running Windows can also connect to the printer by pop-up pairing. To do so, make sure that PC Manager is working and place the computer within 1 meter of the printer. The computer will automatically detect the printer and pop up a connection window. You will then need to follow the onscreen instructions to add the printer.

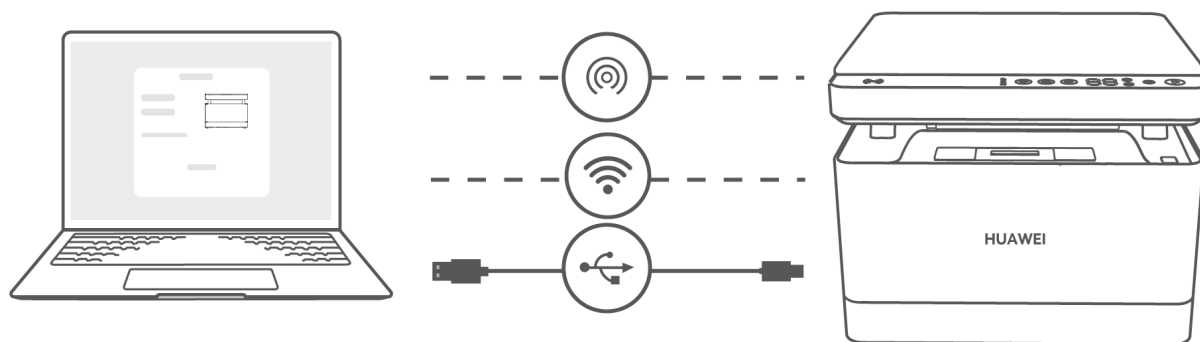


### Method 3: Add the printer in the HUAWEI Print client

If you are not using a Huawei computer running Windows, visit the printer product page (<https://consumer.huawei.com/en/support/>) on Huawei's official customer service website, and download and install the HUAWEI Print client based on your computer system. After the installation is complete, open the HUAWEI Print client and follow the onscreen instructions to select a connection mode (via the printer hotspot, LAN search, or USB cable) to connect to the printer. You can follow the onscreen instructions to configure the printer network during the connection.

- For detailed operations, see **Adding and using printers in the HUAWEI Print client**:

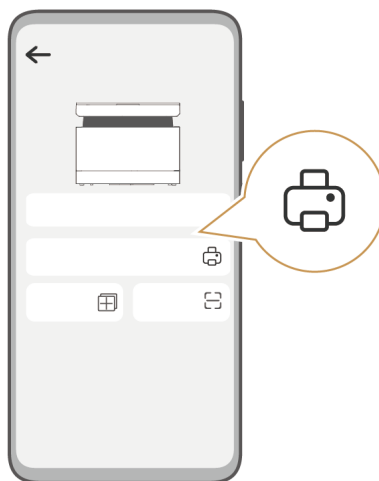
<https://consumer.huawei.com/en/support/content/en-us15848999/>



# Printing


## In-app printing

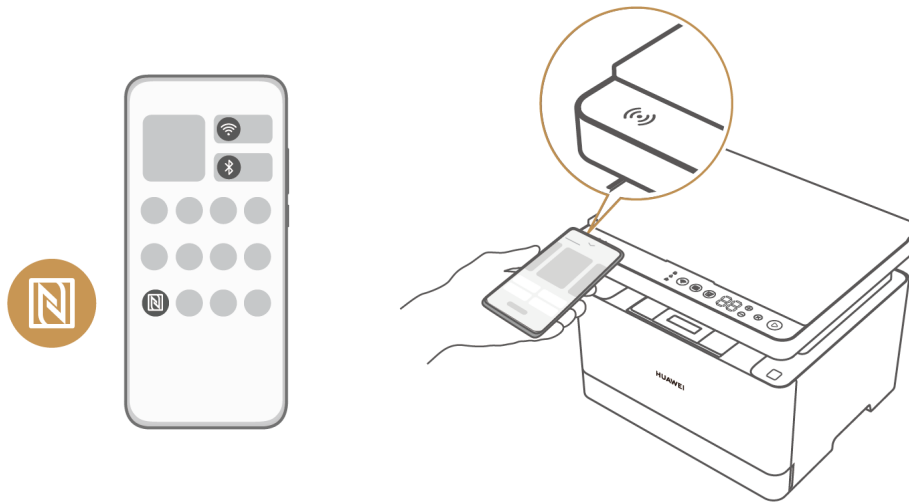
- 1 You can perform the following methods to connect the printer to other devices:  
**Mobile devices:** Use HUAWEI AI Life. For detailed operations, see **Adding and using printers in HUAWEI AI Life:**  
<https://consumer.huawei.com/en/support/content/en-us15849001/>  
**Huawei computers running Windows:** Use HUAWEI PC Manager. For detailed operations, see **Adding and using printers in HUAWEI PC Manager:**  
<https://consumer.huawei.com/en/support/content/en-us15849000/>  
**Other computers (running Windows and macOS)** Use the HUAWEI Print client. For detailed operations, see **Adding and using printers in the HUAWEI Print client**  
<https://consumer.huawei.com/en/support/content/en-us15848999/>
- 2 After connecting the printer to another device, open the printer app (HUAWEI AI Life or the HUAWEI PC Manager), select **Print**, select the file you want to print, and set the printing parameters as prompted to start printing. Alternatively, choose the Huawei printer from an app to print a document. For example, on a computer, open the document you want to print in Word, press **Ctrl+P**, and set the printing parameters as prompted.



## Tap-to-Print

If your phone is running EMUI 12 or later, you can use HUAWEI AI Life to add the Huawei printer, enable NFC on your phone, open a document (using WPS) or picture, and tap your phone's NFC area against the printer's Huawei Share area. You will then be able to set the printing parameters as prompted on the displayed printing screen and start printing.

-  Supported apps include Gallery, Notepad, HUAWEI Browser, and WPS, subject to the actual situation.
- For how to use HUAWEI AI Life on a phone to add the HUAWEI Print clients, see **Adding and using printers in HUAWEI AI Life:**  
<https://consumer.huawei.com/en/support/content/en-us15849001/>



## Direct printing

You can use the printer without having to install any drivers or apps, when it is connected to a device (such as a phone or computer) on the same LAN or the device is connected to the printer's hotspot.

### Method 1: LAN printing

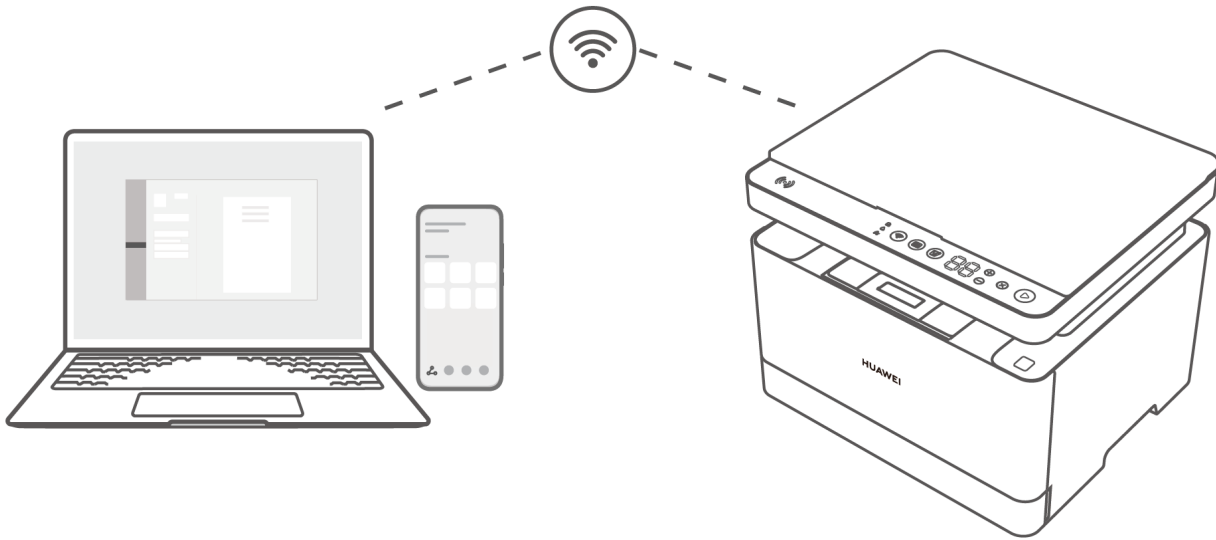
Connect the printer to a device, such as a phone or computer, on the same LAN (the devices are connected to a network wirelessly or by cable), open the file you want to print on the device, select **Print**, choose the Huawei printer (by finding the product name followed by the last four digits of the printer's serial number, which you can view on the nameplate on the back of the printer) on the same LAN from the available printers, and set the printing parameters as prompted to start printing.

For example:

- To print a picture on a phone, open Gallery, select the picture, touch the Share icon (for EMUI 12 phones, touch **Share** and select the Printer icon), choose the Huawei printer, and follow the onscreen instructions to start printing.
- To print a document, such as a Word document on a Windows computer, press **Ctrl+P** and select **Add Printer** from the printer list. On the displayed Windows system settings screen, select **Add a printer or scanner**, add the printer on the LAN as prompted, and print the document. If the computer runs macOS, a list of adjacent printers on the LAN will be displayed, and you'll need to select the Huawei printer and follow the onscreen instructions to print the document.


 Print operations may vary depending on the specific device and app.






## Method 2: Hotspot printing

The printer automatically broadcasts its hotspot when it is powered on. When there is no network connection available, you can connect your phone to the printer's hotspot to print directly.

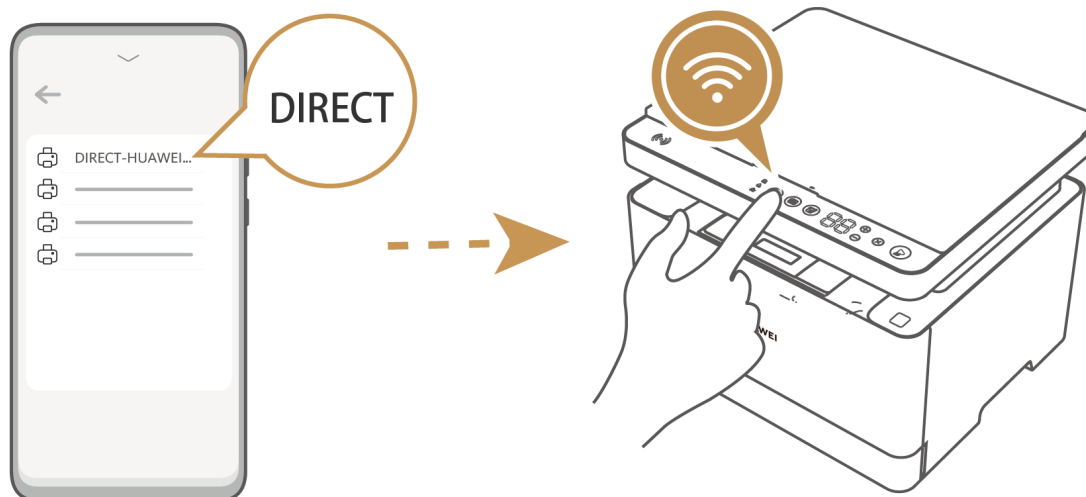
 Hotspot printing is available on phones, but not on computers.

### Method 1 (supported on all phones):

- 1 Press and hold the Start button on the printer for 3 seconds to print the information page, where you'll see the printer's hotspot network identifier and password.
  -  For better security, the printer's hotspot network identifier and password will change every time that the printer is restarted.
- 2 Access the wireless network connection screen on your phone, select the printer's hotspot network identifier name, and enter the password to complete the connection.
- 3 Open the file you want to print and select **Print**. In the printer list, select the name of the target printer and follow the onscreen instructions to print the file.

### Method 2 (supported only on Android and HarmonyOS phones):

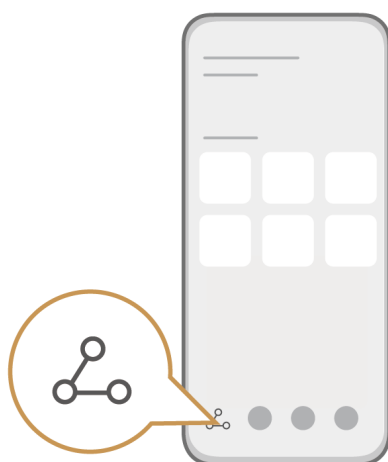
- 1 Enable Wi-Fi on your phone, open the file you want to print, and select **Print**. In the printer list, choose the printer's hotspot name (by finding the name containing **DIRECT** and ending with the last four digits of the printer's serial number, which you can view on the nameplate on the back of the printer).
- 2 When the printer's Network button flashes blue, press the button to confirm the connection.
- 3 Select **Print** on your phone.



## Share printing

You can open a picture or document in an app on a phone and touch the Share icon to quickly start printing it.

- 1 The phone needs to be connected to the printer using the AI Life app or on the same LAN as the printer.
- 2 Using an EMUI 12 phone as an example:  
 To print a document, touch and hold a document in Files, select the Share icon, touch **Print**, choose the Huawei printer (by finding the product name followed by the last four digits of the printer's serial number, which you can view on the nameplate on the back of the printer), and follow the onscreen instructions to start printing.  
 To print a picture, open the picture in Gallery, touch the Share icon and then the Printer icon, choose the Huawei printer, and follow the onscreen instructions to start printing.



## Remote printing

You can remotely control your printer when it is not nearby. To do so, connect it to your device using either one of the following methods.

- **Mobile devices:** Remotely controlling the printer via HUAWEI AI Life. For detailed operations, see **Adding and using printers in HUAWEI AI Life:**  
<https://consumer.huawei.com/en/support/content/en-us15849001/>
- **Huawei computers running Windows:** Use HUAWEI PC Manager to **scan for the printer** or **connect to the printer through pop-up pairing**. Remote printing is not available for other computers running Windows or macOS. For detailed operations, see **Adding and using printers in HUAWEI PC Manager:**  
<https://consumer.huawei.com/en/support/content/en-us15849000/>

To print remotely, perform the following:

**Mobile phones:** Open HUAWEI AI Life, access the printer homepage, select **Print**, and set the printing parameters as prompted to start printing.

**Computers (only supported on Huawei computers running Windows):** In Word/Excel/PowerPoint, select the file you want to print, press **Ctrl+P**, select the Huawei remote printer (by finding the printer name followed by "Cloud"), and set the printing parameters as prompted to start printing.

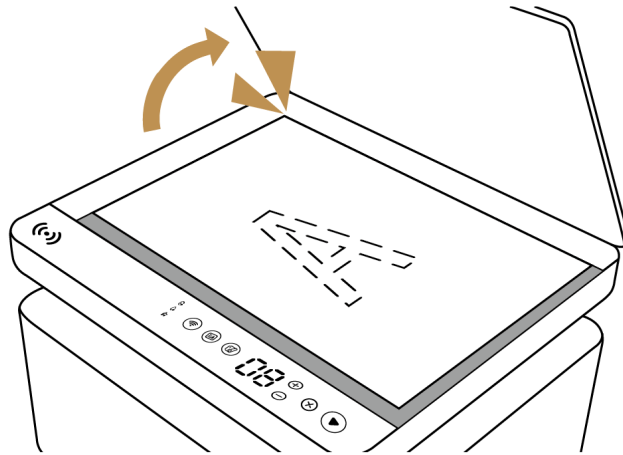


# Copying

## Single-sided copying

### Method 1: Start single-sided copying on the printer.

- 1 Open the scanner cover, place the document you want to copy in the scanning area with the front side facing down, against the left and rear corners, and close the cover.



- 2 Press the Plus (+) and Minus (-) buttons on the touch panel to set the number of copies, and press the Start button to start copying. When the Start button flashes white, it indicates that the printer is copying.



### Method 2: Start single-sided copying in HUAWEI AI Life, HUAWEI PC Manager, or the HUAWEI Print client.

If you have connected the printer to another device using any of the following methods, access the printer homepage, touch **Copy**, and set the copying parameters (including the number of copies, paper size, and paper type) as prompted to start copying.

- **Mobile devices:** Use HUAWEI AI Life. For detailed operations, see **Adding and using printers in HUAWEI AI Life**:

<https://consumer.huawei.com/en/support/content/en-us15849001/>

- **Huawei computers running Windows:** Use HUAWEI PC Manager. For detailed operations, see **Adding and using printers in HUAWEI PC Manager:**

<https://consumer.huawei.com/en/support/content/en-us15849000/>

- **Other computers:** Use the HUAWEI Print client. For detailed operations, see **Adding and using printers in the HUAWEI Print client:**

<https://consumer.huawei.com/en/support/content/en-us15848999/>



## Double-sided copying

### Method 1: Start double-sided copying on the printer.

- 1 Press the Duplex Copy button and open the scanner cover. Place the document you want to copy in the scanning area with the front side facing down, against the left and rear corners, and close the cover.
- 2 Press the Plus (+) and Minus (-) buttons on the touch panel to set the number of copies, and press the Start button to start copying. When the Start button flashes white, it indicates that the printer is copying.
- 3 Wait until the Start button stops flashing, turn over the document, and close the scanner cover.
- 4 Touch the Start button to scan the second side to start copying.



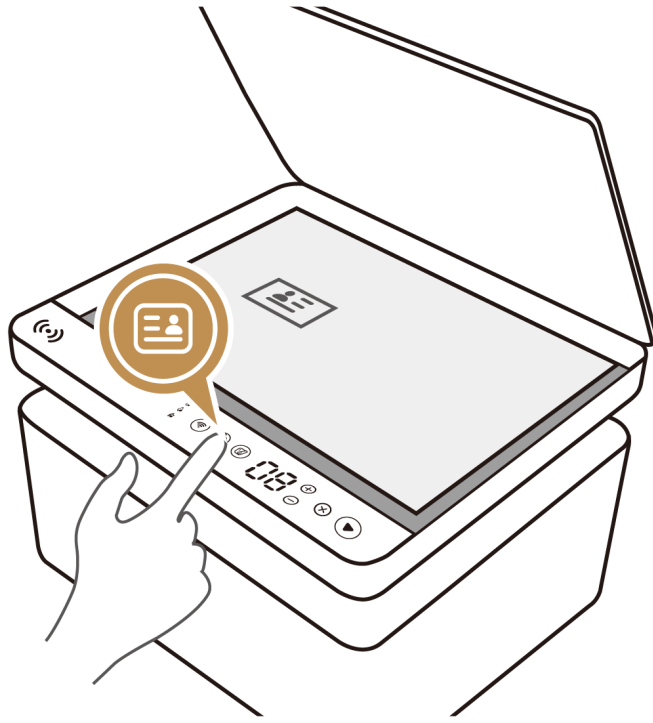
**Method 2: Start double-sided copying in HUAWEI AI Life (on mobile phones), HUAWEI PC Manager, or the HUAWEI Print client (on computers).**

If you have connected the printer to another device using any of the following methods, access the printer homepage, touch **Copy**, set the copying parameters (such as selecting Duplex Copy), and place the document you want to copy as prompted in the scanning area to start copying.

- **Mobile devices:** Use HUAWEI AI Life. For detailed operations, see **Adding and using printers in HUAWEI AI Life:**  
<https://consumer.huawei.com/en/support/content/en-us15849001/>
- **Huawei computers running Windows:** Use HUAWEI PC Manager. For detailed operations, see **Adding and using printers in HUAWEI PC Manager:**  
<https://consumer.huawei.com/en/support/content/en-us15849000/>
- **Other computers:** Use the HUAWEI Print client. For detailed operations, see **Adding and using printers in the HUAWEI Print client:**  
<https://consumer.huawei.com/en/support/content/en-us15848999/>

## Card copying

- 1** Press the Card Copy button, place the card in the correct scanning area (in the A4 area in the upper left corner of the scanner dock), and close the cover.
- 2** Press the Start button to scan the first side.
- 3** After the Start button stops flashing, turn over the card and close the scanner cover.
- 4** Press the Start button to scan the second side and finish copying.



## N-in-1 copying


The N-in-1 copy feature allows you to copy multiple pages onto one page so that you can view your file more easily.

To use this feature, connect the printer to another device using any of the following methods, place the first sheet of the document you want to copy in the scanning area, access the printer homepage, touch **Copy**, set **Copies**, and place the other sheets as prompted in the scanning area to start copying.

- **Mobile devices:** Use HUAWEI AI Life. For detailed operations, see **Adding and using printers in HUAWEI AI Life**:  
<https://consumer.huawei.com/en/support/content/en-us15849001/>
- **Huawei computers running Windows:** Use HUAWEI PC Manager. For detailed operations, see **Adding and using printers in HUAWEI PC Manager**:  
<https://consumer.huawei.com/en/support/content/en-us15849000/>
- **Other computers:** Use the HUAWEI Print client. For detailed operations, see **Adding and using printers in the HUAWEI Print client**:  
<https://consumer.huawei.com/en/support/content/en-us15848999/>

# Scanning

If you have connected the printer to another device using any of the following methods, place the document you want to scan in the scanning area, access the printer homepage, touch **Scan**, and set the scanning parameters (such as the scanning color and quality) as prompted to start scanning.

 Remote scanning is not available.

- **Mobile devices:** Use HUAWEI AI Life to start scanning. For detailed operations, see **Adding and using printers in HUAWEI AI Life:**


<https://consumer.huawei.com/en/support/content/en-us15849001/>

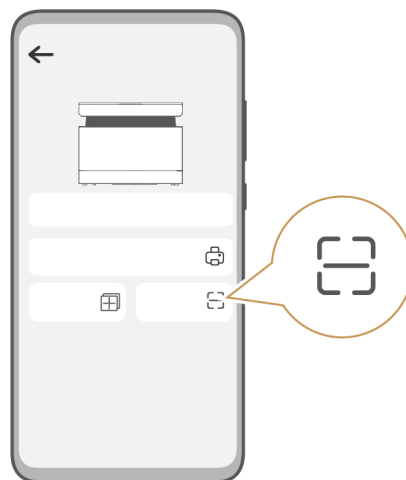
- **Huawei computers running Windows:** Use HUAWEI PC Manager to start scanning. For detailed operations, see **Adding and using printers in HUAWEI PC Manager:**

<https://consumer.huawei.com/en/support/content/en-us15849000/>

- **Other computers:** Use the HUAWEI Print client to start scanning. For detailed operations, see **Adding and using printers in the HUAWEI Print client:**

<https://consumer.huawei.com/en/support/content/en-us15848999/>

 After adding the printer on a macOS computer, you can use the scanning feature provided by the system.





# More

## Resetting the network

Power on the printer, and press and hold the Network button for more than 3 seconds. The network will then be reset and the Network button will flash white, indicating that the printer is ready for network configuration. In this case, connect the printer to a network.



## Updating the firmware

There are multiple ways to update the printer's firmware, depending on the type of the connected device.

- If you have connected the printer to a **mobile device** using HUAWEI AI Life and turned on the switch for automatic firmware updates in this app, firmware updates will automatically be downloaded and installed when the printer is idle. The printer will restart to complete the updates.

**i** To enable or disable automatic firmware updates: Open HUAWEI AI Life, touch the More icon on the printer device screen, select **Settings**, and enable or disable **Auto-update**. Once you disable this feature, new firmware versions will no longer be automatically downloaded and installed.

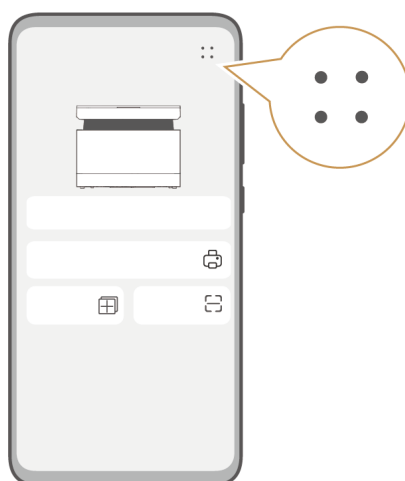
If Device Updates is disabled, you can manually update the firmware as follows: Open HUAWEI AI Life, go to **Me > Settings > Device Updates**, and follow the onscreen instructions to update the printer firmware when a new firmware version is available.

For detailed operations, see **Adding and using printers in HUAWEI AI Life**:

<https://consumer.huawei.com/en/support/content/en-us15849001/>

- If you are using a **Huawei computer running Windows** and have added the printer via HUAWEI PC Manager, access the printer homepage and select **Firmware update**. Download and update the firmware when a new version is detected.

**i** For detailed operations, see **Adding and using printers in HUAWEI PC Manager**:  
<https://consumer.huawei.com/en/support/content/en-us15849000/>



## Installing the driver

The Huawei printer driver is integrated into HUAWEI PC Manager or HUAWEI Print client. You can add the printer in PC Manager or download and install the HUAWEI Print client to install the driver.

- **Huawei computers running Windows:** Connect to the printer using PC Manager. The printer driver will be automatically installed. Make sure that the network connection is normal. If a driver update is available for the printer, a red icon will be displayed next to the More icon on the home screen of PC Manager. In this case, click the More icon, find the printer in **Settings**, and select **Update**.

**i** For detailed operations, see **Adding and using printers in HUAWEI PC Manager**:  
<https://consumer.huawei.com/en/support/content/en-us15849000/>

- **Other computers:** Download and install the HUAWEI Print client, then connect it to the printer. The client contains the printer driver. After you have added the printer using the HUAWEI Print client, access the homepage, click the More icon, and select **Update**. If a new client version is detected, you can install the update. During the update process, the printer driver on the computer is also updated.

**i** For detailed operations, see **Adding and using printers in the HUAWEI Print client**:  
<https://consumer.huawei.com/en/support/content/en-us15848999/>

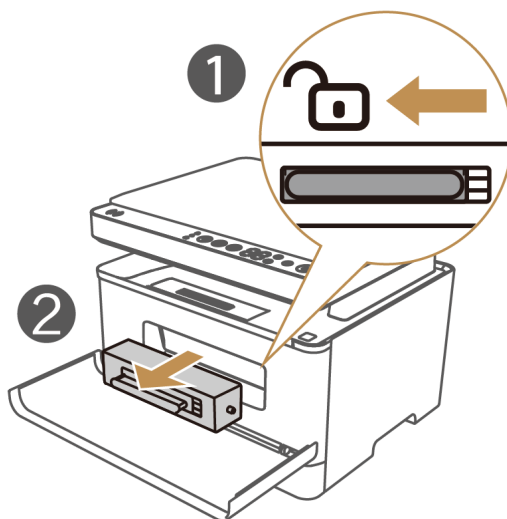
## Replacing the toner cartridge

When the printer is running out of toner, the "Toner Low" indicator on the touch panel will turn red and the error code "7F" or "81" will be displayed, reminding you to replace the toner cartridge.

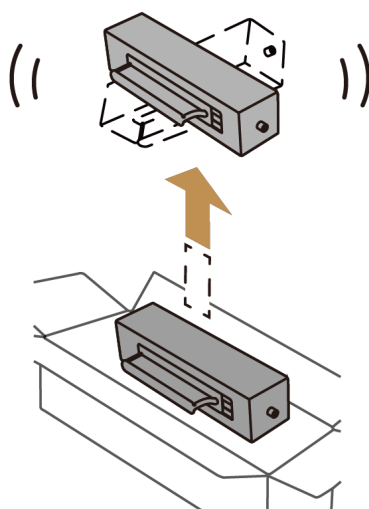
**i** It is recommended that you go to an official Huawei channel to purchase an original toner cartridge for the printer. If you use a non-original toner cartridge, the printing quality and performance of the printer may not meet the design standards and void the warranty services provided by the original manufacturer.

**1** Open the front cover, unlock the toner cartridge, and take the old toner cartridge out.

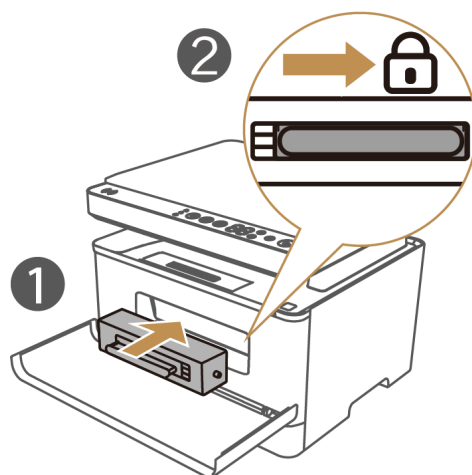
**i** Clean your clothes or hands promptly if they get stained with toner.



**2** Take the new toner cartridge out of the packaging box and shake it horizontally for 2 to 3 seconds to prevent toner from accumulating.



**3** Insert and lock the new toner cartridge and close the front cover.



- 4** Reset the toner cartridge: Press and hold the Plus (+) and Minus (-) buttons together for 5 seconds until "66" is displayed, indicating the printer has entered the toner transfer phase. The printer will then generate a buzzing sound that will last for about 100 seconds. When the buzzing sound ends, it indicates that the new toner cartridge has been inserted successfully.

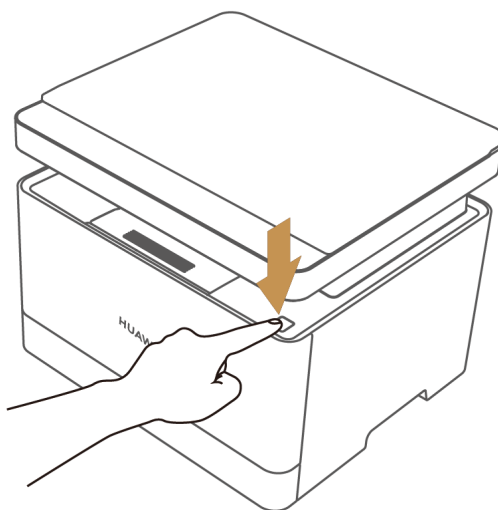


## Replacing the drum cartridge

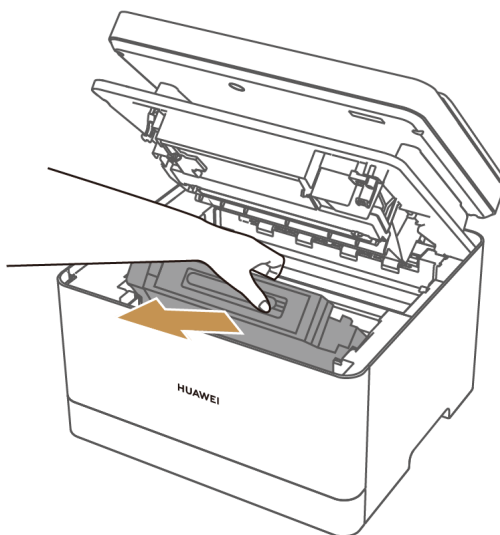
When the code "CC" or "86" is displayed on the touch panel and the Start button flashes red, it indicates that you need to replace the drum cartridge. To do so, go to an official Huawei channel to purchase an original drum cartridge assembly (drum cartridge + toner cartridge) compatible with the printer and replace it in a timely manner.

- i** • When replacing the drum cartridge, you also need to replace the toner cartridge. Please purchase the drum cartridge assembly to replace it.
- It is recommended that you go to an official Huawei channel to purchase an original drum cartridge assembly for the printer. If you use a non-original drum cartridge assembly, the printing quality and performance of the printer may not meet the design standards, and void the warranty services provided by the original manufacturer.

**1** Press the button on the top cover to open the top cover.

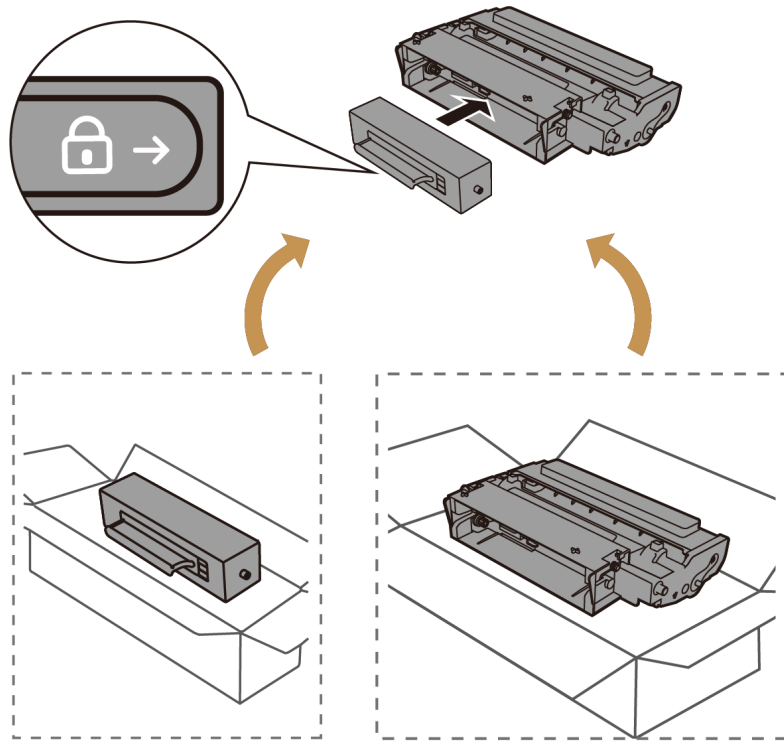


**2** Hold the inner handle of the old drum cartridge and pull it up at an angle to carefully remove the old drum cartridge assembly.

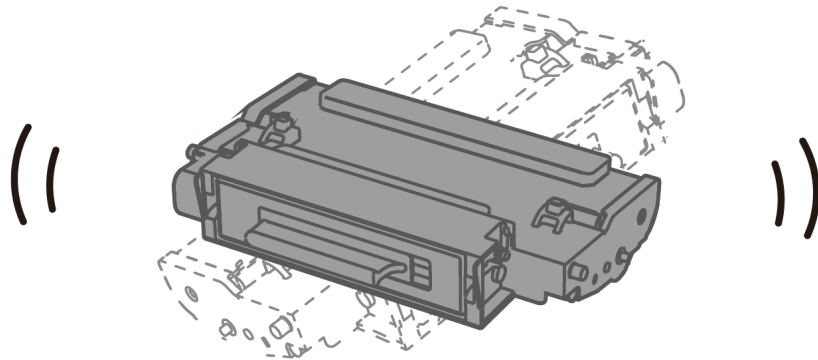


**3** Take out the new toner cartridge and drum cartridge from the packaging, insert the new toner cartridge on the new drum cartridge, and lock the toner cartridge.

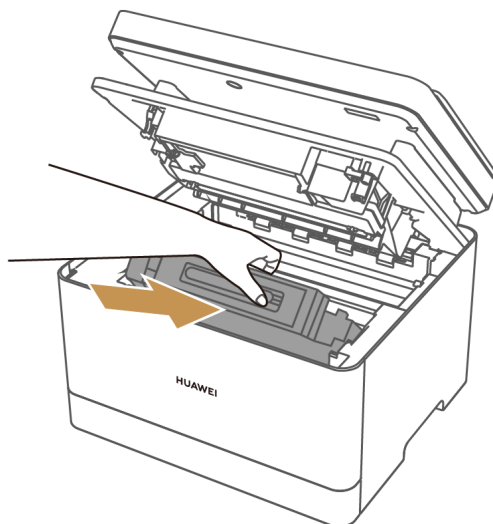
- i** Clean your clothes or hands promptly if they get stained with toner.



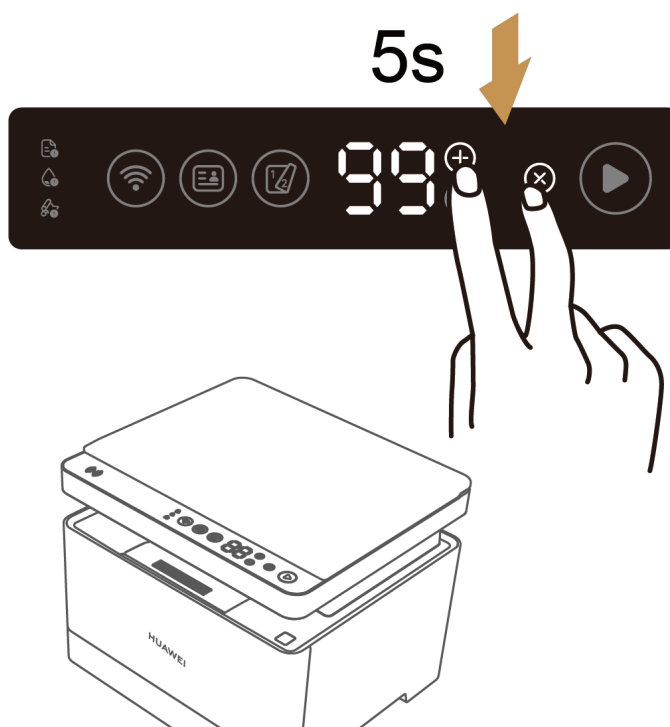
- 4** Shake the newly installed drum cartridge assembly for 2 to 3 seconds to prevent the toner from accumulating.



- 5** Install the new drum cartridge assembly down at an angle and press the top cover down until it is closed.



- 6** Press and hold  $\oplus$  and  $\otimes$  for 5 seconds until "99" is displayed. After the printer is initialized, the drum cartridge is reset successfully and you can perform operations such as printing.



## Restoring the printer to its factory settings

After the printer is restored to its factory settings, the network settings are removed and you will need to configure the network again.

### **Method 1: Restore the printer to its factory settings on the printer.**

Press and hold the Cancel button until "88" is displayed. The printer will then be restored to its factory settings.



## Method 2: Restore the printer to its factory settings in HUAWEI PC Manager or the HUAWEI Print client.

If you have connected the printer to another device using either of the following methods, access the printer homepage, click the **More** icon, select **Factory reset**, and follow the onscreen instructions to complete the settings.

- **Huawei computers running Windows:** Use HUAWEI PC Manager. For detailed operations, see **Adding and using printers in HUAWEI PC Manager**:  
<https://consumer.huawei.com/en/support/content/en-us15849000/>
- **Other computers:** Use the HUAWEI Print client. For detailed operations, see **Adding and using printers in the HUAWEI Print client**.  
<https://consumer.huawei.com/en/support/content/en-us15848999/>

## Checking the printer's serial number

Serial number ("SN" for short) is the ID of a product and is also known as the machine number, authentication code, and registration code. You can view the printer's SN in any of the following ways:

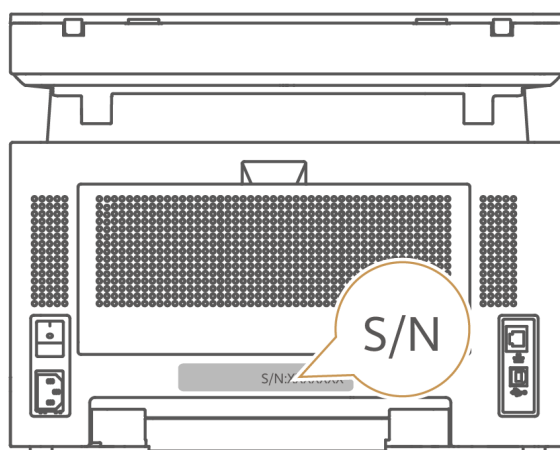
Method 1: Press and hold the Start button of the printer for 3 seconds to print the printer's system information page. You will then be able to view the serial number on the information page.

Method 2: Connect the printer to a device such as a phone or computer. You will then be able to view the serial number in the corresponding app.

- **Mobile devices:** Once connected, open HUAWEI AI Life, access the printer homepage, touch the **More** icon, and go to **Settings > Device information > SN**.
- **Computers:** Once connected, open HUAWEI PC Manager, access the printer homepage, click the **More** icon, and go to **Settings > Settings > SN**.



Method 3: Check the printer's serial number displayed on the packaging and nameplate on the back of the printer.



# Safety information

This section contains important information about the operation of your device. It also contains information about how to use the device safely. Read this information carefully before using your device.

## Electronic device

Do not use your device if using the device is prohibited. Do not use the device if doing so causes danger or interference with other electronic devices.

## Interference with medical equipment

- Follow rules and regulations set forth by hospitals and health care facilities. Do not use your device where prohibited.
- Some wireless devices may affect the performance of hearing aids or pacemakers. Consult your service provider for more information.
- Pacemaker manufacturers recommend that a minimum distance of 15 cm be maintained between a device and a pacemaker to prevent potential interference with the pacemaker. If using a pacemaker, hold the device on the side opposite the pacemaker and do not carry the device in your front pocket.

## Operating environment

- Avoid dusty, damp, or dirty environments. Avoid magnetic fields. Using the device in these environments may result in circuit malfunctions.
- Before connecting and disconnecting cables, stop using the device and disconnect it from the power supply. Ensure that your hands are dry during operation.
- During thunderstorms, power off your device and remove all cables connected to it to protect against lightning strikes.
- Do not use your device during thunderstorms to protect your device against any danger caused by lightning.
- Use the device at a temperature between 5°C and 35°C and at a humidity between 20% and 80% (non-condensing). Store the device and its accessories at a temperature between -20°C and +40°C and at a humidity between 30% and 93%. Extreme heat or cold may damage this device.
- To protect your device or accessories from fire or electrical shock hazards, avoid rain and moisture.
- Keep the device away from sources of heat and fire, such as a heater, microwave oven, stove, water heater, radiator, or candle.
- Do not block device openings. Reserve a minimum of 10 cm around the device to dissipate heat.

- Keep the device and accessories in a well-ventilated and cool area away from direct sunlight. Do not enclose or cover your device with towels or other objects. Do not place the device in a container with poor heat dissipation, such as a box or bag.
- Stop using your device or applications for a while if the device is overheated. If skin is exposed to an overheated device for an extended period, low temperature burn symptoms, such as red spots and darker pigmentation, may occur.
- Do not place any object, such as a candle or a water container, on the device. If any foreign object or liquid enters the device, immediately stop using it, power it off, and remove all cables connected to it. Then, contact a Huawei authorized service center.
- If you inhale unused or waste toner, gargle your mouth with plenty of water and go somewhere with fresh air. If toner enters your eyes, rinse immediately with plenty of water and see a doctor if necessary.
- It is recommended that you leave the new printer at indoor temperature for 2 to 4 hours before use if you have moved the printer from a low-temperature outdoor environment to an indoor environment. Otherwise, the printing quality will be affected due to the optical glass surface fogging up after the sudden change in temperature.
- Be careful of your fingers being pinched when opening or closing the top cover of the device.
- Do not forcibly pull out the paper during printing, as this may damage the printer.
- Exercise caution when adding paper or removing jammed paper. Paper edges are sharp and may cause paper cuts.
- To avoid hurting your fingers, exercise caution when removing jammed paper.
- Do not put toner, toner cartridges, or powder boxes into a fire.
- Dispose of used toner cartridges and powder boxes in accordance with local laws and regulations.
- If your hands or clothes are stained with toner, wipe it off immediately or clean them with cold water.
- If the toner falls on the ground, use a wet cloth to carefully remove the toner so that it does not scatter.
- If you inhale unused or waste toner, gargle your mouth with plenty of water, go somewhere with fresh air, and see a doctor if necessary.
- If toner enters your eyes, rinse immediately with plenty of water and see a doctor if necessary.

### **Safety of lasers**

This device is classified as a Class 1 Laser product as per IEC 60825-1: 2014.

Note: The operator may be exposed to radiation if the controller is used, adjusted, or operated without following the instructions in this manual.



• **Warning:**



Exercise caution when closing the top cover to avoid hurting your hands.

This device is not suitable for use in locations where children are likely to be present.



• **Hot parts**

Be careful of your fingers when you handle the parts.

Wait one and a half hours after switching off before handling the parts.


### Child safety

- Comply with all precautions with regard to child safety. Letting children play with the device or its accessories may be dangerous. The device includes detachable parts that may present a choking hazard. Keep away from children.
- The device and its accessories are not intended for use by children. Children should only use the device with adult supervision.
- Do not allow children or pets to bite or suck the device or accessories. Doing so may result in damage or explosion.
- Keep children away from toner cartridges and powder boxes.

### Power supply safety

- The power plug should be connected to a socket that is easily accessible, and the socket should be connected to the ground cable.
- Disconnect the power supply from this device and remove the power plug from the power socket when this device is not in use.
- If the power cable is damaged (for example, the cord is exposed or broken), or the plug loosens, stop using it at once. Continued use may lead to electric shocks, short circuits, or fire.
- Do not touch the power cable with wet hands or pull the power cable out of the power supply.
- Do not touch this device or power supply with wet hands. Otherwise, short circuits, faults, or electric shocks may occur.

### Stability

 **Stability risk:** The device may fall over, causing serious personal injury or death. Many injuries, especially to children, can be avoided by taking simple precautions such as:

- Never place the device in an unstable position, and never place it on high furniture, such as cabinets or bookcases.
- Always route the wires and cables connected to the device so that they do not trip, pull, or grab.
- Do not place fabric or other materials between this equipment and supporting furniture.

- Always make children aware of the dangers of climbing furniture to reach the device or its controls.
- Do not place objects, such as toys, that may induce children to climb on top of the device or on the furniture where the device is placed.
- Follow the same safety precautions if existing equipment needs to be retained and repositioned.

### **Cleaning and maintenance**

- You are not advised to update components or replace modules by yourself. If you need such services, contact a Huawei customer service center.
- Keep the device and accessories dry. Do not attempt to dry it with an external heat source, such as a microwave oven or hair dryer.
- Do not expose your device or accessories to extreme heat or cold. These environments may interfere with proper function and may lead to fire or explosion.
- Avoid collision, which may lead to device malfunctions, overheating, fire, or explosion.
- Before you clean or maintain the device, stop using it, stop all applications, and disconnect all cables connected to it.
- Do not use any chemical detergent, powder, or other chemical agents (such as alcohol and benzene) to clean the device or accessories. These substances may cause damage to parts or present a fire hazard. Use a clean, soft, and dry cloth to clean the device and accessories.
- Do not place magnetic stripe cards, such as credit cards and phone cards, near the device for extended periods of time. Otherwise the magnetic stripe cards may be damaged.
- In the event that there are any broken parts due to the device colliding with a hard object or breaking after a strong external impact, do not touch or attempt to remove them. Stop using the device immediately and contact a Huawei customer service center.

### **Disposal and recycling information**



The symbol on the product, battery, literature, or packaging means that the products and batteries should be taken to separate waste collection points designated by local authorities at the end of the lifespan. This will ensure that EEE waste is recycled and treated in a manner that conserves valuable materials and protects human health and the environment.

For more information, please contact your local authorities, retailer, or household waste disposal service or visit the website <https://consumer.huawei.com/en/>.

### **Reduction of hazardous substances**

This device and its electrical accessories comply with local applicable rules on the restriction of the use of certain hazardous substances in electrical and electronic equipment, such as EU REACH regulation, RoHS and Batteries (where included) directive. For declarations of

conformity about REACH and RoHS, please visit the website

<https://consumer.huawei.com/certification>.

### **RF Exposure Information**

As recommended by international guidelines, the device is designed to comply with the limits established by the market that the device will be placed on. The device should be installed and operated with a minimum distance of 20 cm between the device and your body.

### **Restrictions in Norway**

Use of this radio equipment is not allowed in the geographical area within a radius of 20 km from the center of Ny-Ålesund, Svalbard.

# Legal Notice

**Copyright © Huawei 2022. All rights reserved.**

The product described in this manual may include copyrighted software of Huawei and possible licensors. Customers shall not in any manner reproduce, distribute, modify, decompile, disassemble, decrypt, extract, reverse engineer, lease, assign, or sublicense the said software, unless such restrictions are prohibited by applicable laws or such actions are approved by respective copyright holders.

## **Trademarks and Permissions**

The *Bluetooth*<sup>®</sup> word mark and logos are registered trademarks owned by *Bluetooth SIG, Inc.* and any use of such marks by Huawei Technologies Co., Ltd. is under license. Huawei Device Co., Ltd. is an affiliate of Huawei Technologies Co., Ltd.

Wi-Fi<sup>®</sup>, the Wi-Fi CERTIFIED logo, and the Wi-Fi logo are trademarks of Wi-Fi Alliance.

Other trademarks, product, service and company names mentioned may be the property of their respective owners.

## **Notice**

Some features of the product and its accessories described herein rely on the software installed, capacities and settings of local network, and therefore may not be activated or may be limited by local network operators or network service providers.

Thus, the descriptions herein may not exactly match the product or its accessories which you purchase.

Huawei reserves the right to change or modify any information or specifications contained in this manual without prior notice and without any liability.

## **DISCLAIMER**

ALL CONTENTS OF THIS MANUAL ARE PROVIDED "AS IS". EXCEPT AS REQUIRED BY APPLICABLE LAWS, NO WARRANTIES OF ANY KIND, EITHER EXPRESS OR IMPLIED, INCLUDING BUT NOT LIMITED TO, THE IMPLIED WARRANTIES OF MERCHANTABILITY AND FITNESS FOR A PARTICULAR PURPOSE, ARE MADE IN RELATION TO THE ACCURACY, RELIABILITY OR CONTENTS OF THIS MANUAL.

TO THE MAXIMUM EXTENT PERMITTED BY APPLICABLE LAW, IN NO EVENT SHALL HUAWEI BE LIABLE FOR ANY SPECIAL, INCIDENTAL, INDIRECT, OR CONSEQUENTIAL DAMAGES, OR LOSS OF PROFITS, BUSINESS, REVENUE, DATA, GOODWILL SAVINGS OR ANTICIPATED SAVINGS REGARDLESS OF WHETHER SUCH LOSSES ARE FORESEEABLE OR NOT.

THE MAXIMUM LIABILITY (THIS LIMITATION SHALL NOT APPLY TO LIABILITY FOR PERSONAL INJURY TO THE EXTENT APPLICABLE LAW PROHIBITS SUCH A LIMITATION) OF HUAWEI ARISING FROM THE USE OF THE PRODUCT DESCRIBED IN THIS MANUAL SHALL BE LIMITED TO THE AMOUNT PAID BY CUSTOMERS FOR THE PURCHASE OF THIS PRODUCT.

**Import and Export Regulations**

Customers shall comply with all applicable export or import laws and regulations and be responsible to obtain all necessary governmental permits and licenses in order to export, re-export or import the product mentioned in this manual including the software and technical data therein.

**Privacy Policy**

To better understand how we protect your personal information, please see the privacy policy at <https://consumer.huawei.com/privacy-policy>.

**For More Help**

Visit <https://consumer.huawei.com/en/support> for the most up-to-date contact information for your country or region.

ALL PICTURES AND ILLUSTRATIONS IN THIS GUIDE, INCLUDING BUT NOT LIMITED TO THE DEVICE COLOR, SIZE, AND DISPLAY CONTENT, ARE FOR YOUR REFERENCE ONLY. THE ACTUAL DEVICE MAY VARY. NOTHING IN THIS GUIDE CONSTITUTES A WARRANTY OF ANY KIND, EXPRESS OR IMPLIED.